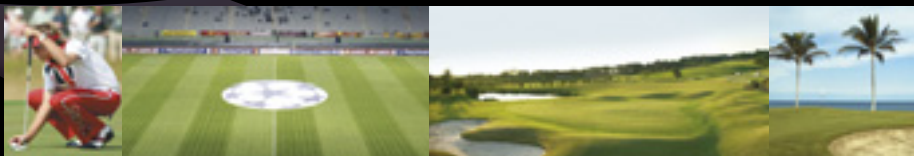




Johnson's
SPORTS SEED

**A GUIDE TO QUALITY
GRASS SEED MIXTURES**



Mixture Selector

Mixture Selector

Green	Tee	Fairway	Rough	Drive
🌀 Green 105 CT	🌀 Tee 115 CT	🌀 Fairway 115 CT	🌀 Rough 125 CT	🌀 Drive 120 CT
🌀 Green 110 CT	🌀 Tee 120 CT	🌀 Fairway 120 CT	🌀 Rough 130 CT	🌀 Drive 135 CT
🌀 Green 115 CT	🌀 Tee 125 CT	🌀 Fairway 125 CT	🌀 Rough 155 CT	🌀 Drive 140 CT
🌀 Green 120 CT	🌀 Tee 130 CT	🌀 Fairway 130 CT	🌀 Rough 160 CT	🌀 Drive 145 HD
	🌀 Tee 135 CT	🌀 Fairway 135 CT	🌀 Rough 165 HD	🌀 Drive 150 CT
	🌀 Tee 140 CT	🌀 Fairway 140 CT	🌀 Rough 170 HD	🌀 Drive 150 CT/HD
	🌀 Tee 145 HD	🌀 Fairway 145 HD		
	🌀 Tee 150 CT/HD			

CT stands for “Cold & Temperate areas”, HD stands for “Hot & Dry areas”



Johnsons Sports Seed...

...puts success at your feet



A passion for excellence

Consistently improving and setting new standards is only possible when you care passionately about what you do. At Johnsons our passion is for quality sports turf and its near perfect production.

We understand that people appreciate sport and the emotion it generates. Whatever their sport, players deserve a surface that can absorb all they dish out and bounce back for the next fixture. From rugby pitches to golf courses, Johnsons grass playing surfaces are designed to cope with the best of sport and diverse climatic conditions all over Europe, both **cold & temperate [CT]** and **hot & dry [HD]**.



The range of Johnsons seed mixtures represents over 175 years of unrivalled quality.

For over 175 years Johnsons seed mixtures have been helping to produce quality sports turf with an unequalled reputation for technical excellence, reflecting the standards set by the people who use them – men and women who lead the way in sports turf management.

Johnsons seed mixtures are produced by Europe's largest grass breeder and producer, DLF-TRIFOLIUM.

We are proud to present our new range.

Continued Investment...

Complete Technical Support

Our experienced team of technical representatives are always available for our customers, offering:

- Sound advice on variety and mixture selection
- Technical advice
- Special mix advice

Quality

- Johnsons varieties from our breeding are market leading
- Johnsons is the purest seed on the market.
- Johnsons seed is produced under rigorously controlled conditions.
- From breeder to bag, from administration to laboratory, Johnsons Sports Seed results in the best quality fields possible.
- Top quality seed for top quality customers:
Johnsons Sports Seed.

Research & Development

Significant investment in equipment and facilities has been made to support this vital area of the company. Trials and demonstration areas of all crops are grown and evaluated Europe-wide. Close links with leading independent organisations and breeders such as STRI, TGA, BIGGA, IOG and BALI ensure that Johnsons Sports Seed mixtures remain at the forefront of technical development in amenity grass.



New Johnsons Top Varieties...

Perennial ryegrass

Dickens 1 is the new top variety from the Johnsons portfolio. It is very fine leaved and has a high shoot density, resulting in a uniform and dense appearance.

Cassiopeia is a top variety for lawns. The excellent visual merit is accompanied by very good resistance to red thread disease. It is top rated in official trials in both UK and Germany.

There are no weak spots for **Berlioz 1**. Due to high scores on all rated characters, this variety will never disappoint you. It has excellent wear tolerance, recovery and tolerance to red thread and foot rot.

Tophat 2 is a new generation, heat and disease tolerant, very dark green, endophyte enhanced perennial ryegrass variety. It has good resistance to gray leaf spot disease, and is excellent for winter overseeding programs on greens, tees and fairways.

Smooth-stalked meadow grass

Mozart I is a very versatile variety. It is top in wear tolerance and compared to other wear tolerant varieties **Mozart I** has a much better disease resistance. Due to the top performance in persistence, disease resistance and fineness of leaves it performs extremely well under all applications whether they be sport, lawn and ornamental.

Rough-stalked meadow grass

Sabrena I is our master of the shady conditions and out competes renews the small group of available varieties by being darker green, finer leaved and more dense.

Tall fescue

Drought resistance, fine leaves and high density, **Jasmine** has it all. As a consequence it has an above average summer appearance, with excellent water saving characteristics. Recommended for sports and ornamental use in hot and dry regions.

Tomcat I combines superior wear tolerance with high shoot density. The visual merit during the winter months is far above average and good disease tolerance ensures this is an attractive turf.

No other variety shows such very fine leaves combined with an outstanding wear tolerance as **Filippa**. In addition, it has good resistance to or tolerates most common diseases like red thread, rusts, leafspot and Fusarium blight.

Hard fescue

Hard fescue is known for its resistance to drought and slow growth. In addition it performs well under extensive maintenance and in shady areas. **Cantona** does the job, especially in landscaping.

Creeping bentgrass

Independence I is an upright, aggressive, fine textured, dense variety. It establishes quickly, is highly resistant to *Poa annua* invasion, and will recover quickly from ball marks and divots. In conclusion it is ideal for use on golf greens. Due to its mowing height flexibility, it is suitable on fairways and tees as well.

Johnsons species characteristics and main varieties used...

BENTGRASS

Browntop Bent

Latin name: *Agrostis tenuis*

Characteristics:

- High quality and dense
- Self repairing with rhizomes
- Good disease resistance
- Tolerant of close mowing

Varieties: Jorvik, Polana, Denso

Creeping Bentgrass

Latin name: *Agrostis stolonifera*

Characteristics:

- Very dense under close mowing
- Best at mowing heights of 15mm or less
- Spreads laterally to fill-in divots

Varieties: Independence I

Velvet Bentgrass

Latin name: *Agrostis canina*

Characteristics:

- Exceptionally dense
- Finest texture of all the bentgrasses
- High disease resistance
- Low N requirement

Varieties: Villa 1, Legendary

SMOOTH STALKED MEADOW GRASS (KENTUCKY BLUEGRASS)

Latin name: *Poa pratensis*

Characteristics:

- Good wear tolerance
- Spreads laterally to fill-in divots
- Easily renovated with perennial ryegrass
- Moderate shade tolerance and good heat tolerance (survival)

Varieties: Cocktail, Harmonie, Julius, Miracle, Mozart 1, Yvette

PERENNIAL RYEGRASS

Latin name: *Lolium perenne*

Characteristics:

- Very quick establishment
- Very good traffic tolerance
- Easily improved by renovation with other perennial ryegrass varieties
- Flexible and adaptable

Varieties:

For cold and temperate regions:

Bizet 1, Cleopatra, Conrad 1, Margarita, Sauvignon, Jessica, Cassiopeia, Dickens I.

For hot and dry regions:

Keystone, Neruda 1, Ponderosa, Stravinsky, Tophat 2, Berlioz 1

RED FESCUE

Chewings fescue

Latin name: *Festuca rubra commutata*

Characteristics:

- Good drought and shade tolerance
- Requires minimal water and fertilizer
- Fairly fast establishment rate
- Relatively easy to renovate with additional red fescue
- Few disease problems

Varieties: Blenheim, Center, Calliope, Capriccio, Florasol, Greensleeves, Legende, Bellaire

Slender creeping red fescue

Latin name: *Festuca rubra trichophylla*

Characteristics:

- Very high shoot density and fine appearance
- Fairly fast establishment rate
- Relatively easy to renovate with additional red fescue
- High shade tolerance (under light wear)
- Spreads to laterally fill-in divots
- Well suited for low nutrient and water supply

Varieties: Amarone, Cezanne, Carousel, Mocassin, Rosita, Smirna, Zamboni,

Strong creeping red fescue

Latin name: *Festuca rubra rubra*

Characteristics:

- Faster establishment rate than other red fescues
- Fairly easy to renovate with additional red fescue
- Ability to regenerate after wear
- Stabilizes root zones and regenerates damages in the sward
- Well suited for low nutrient and water supply

Varieties: Rossinante, Sergei

TALL FESCUE

Latin name: *Festuca arundinacea*

Characteristics:

- Very good resistance to extreme heat and cold
- Fairly easy to renovate with additional tall fescue
- Few pest problems
- Excellent drought tolerance
- Moderate to good traffic tolerance

Varieties: Beagle 1, Debussy 1, Filippa, Montserrat, Rembrandt, Tomcat 1, Tulsa, Jasmin

HARD FESCUE

Latin name: *Festuca ovina L.*

Characteristics:

- low input requirements
- very drought and heat tolerant
- very high winter hardiness
- high density
- Good shade tolerance

Varieties: Cantona, Dumas I, Nordic, Quatro (Sheeps fescue)

Overseeding...

Turf managers maintaining the full range of sports areas will appreciate the extensive work carried out by the DLF-Trifolium breeding team to produce cultivars offering high ratings for wear tolerance, sward density and tolerance of close mowing. The mixture formulations following, and the varieties therein, take full advantage of these characteristics, providing the sports turf manager with assured sward performance.

STRI trial on the effects of different seeding rates

Are you applying sufficient seed to create the desired result?

DLF-Trifolium have recently commissioned the STRI to carry out an independent trial studying the effects of different seeding rates.

The trial was set up to examine the speed of recovery, over an 8 week period, of a heavily worn perennial ryegrass sward overseeded with a perennial ryegrass mixture sown at different seed rates.

An area of perennial ryegrass turf was intensively worn using a differential slip wear machine fitted with football stud rotors. The trial area was prepared using an Auto Seeder. Four passes were made over the area in four different directions to produce a fine tilth.

Conclusion

Increasing overseeding rates during the renovation of worn perennial ryegrass turf dramatically increased the speed of establishment and turf quality of the sward. During the establishment phase there was a direct relationship between seed rate and turf quality. The higher seed rates markedly reduced the time required to achieve a surface that would be deemed fit for use. The density and uniformity of sward produced at the end of the establishment phase was also improved by increasing the normal seed rates.

WEEK 3

ABOVE
75g/m²



STANDARD
25g/m²



CONTROL
Control



- Very marked difference between seeding rates
- Greater grass cover and increased turf quality for highest seed rate
- All significantly better than standard (25g/m²) and half standard (12.5g/m²)

WEEK 5

ABOVE
75g/m²



STANDARD
25g/m²



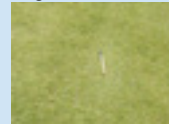
CONTROL
Control



- Grass cover and visual turf quality very similar for highest seeding rates
- Higher seed rates significantly more grass cover and better visual turf quality than standard and half standard
- Significant benefit of overseeding on grass cover and visual turf quality

WEEK 8

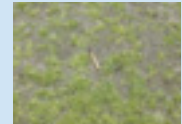
ABOVE
75g/m²



STANDARD
25g/m²



CONTROL
Control



- Differences between the extremes of seeding rate still apparent



The Benefits of TurfGuard

- Increases seed germination
- Increases root mass up to 80%
- Increases ground cover up to 50%
- Improves resistance to disease
- Shorter lead times from sowing to play

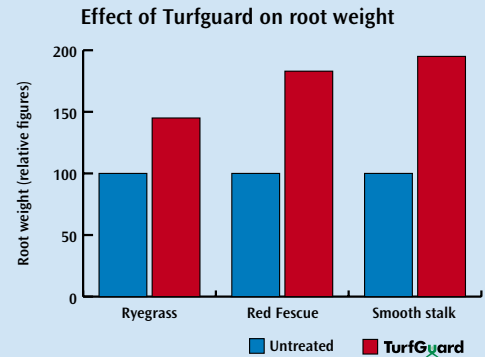
Why use TurfGuard?

Creating an amenity sward can be time consuming and expensive, consequently Turf professionals seek to ensure the maximum chance of success by preparation and seed selection. TurfGuard creates a third line of defence from the moment the seed is sown by protecting and nourishing the seedlings. In field trials, using TurfGuard substantially increases root mass and shoot density while improving disease resistance leading to a greatly enhanced sward. This improved establishment leads to reduced invasion of poa annua and weeds and a shorter time from sowing to play.

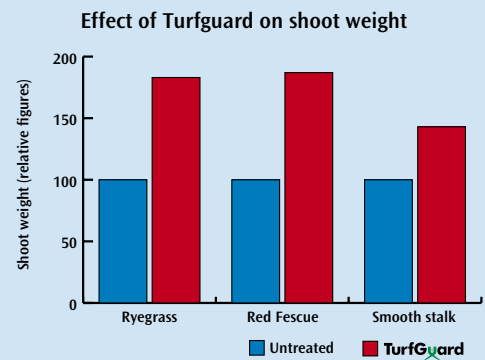
What is TurfGuard?

TurfGuard is a specific strain of the soil bacteria *Bacillus subtilis*, which is commonly found in the soil, on roots and on leaves. Applied to grass seed its spores germinate and rapidly colonise the root system of the new plant. This provides a barrier to soil pathogens while producing beneficial growth hormones that assist the grass plant in numerous ways.

Root weight



Shoot weight



Source: UK trials



Johnsons Golf Seed...

Johnsons Sports Seed golf program is made up of a range of mixtures or varieties for greens, tees, fairways and roughs. Within each mixture the varieties have been carefully selected for top performance. The range is suitable for other very hot to very cold climates.

True putting greens

Putting solutions for greens are selected for year round homogeneous true surfaces with lack of diseases. Depending on your wishes, the choice can be made from traditional high input varieties to sustainable solutions based on the most recent research recommendations.

Low growing fairways

The fairway surface is always important and performs a key role. The annual growth of modern varieties is reduced by 20-30% compared to standard varieties and as a consequence,

Johnson's seed produces a better playing quality along with reduced workload.

Increased wear tolerance maintains the turf to the satisfaction of the players and offers an easy maintenance regime even in the most exposed areas.

Hardwearing tees

Johnsons tee mixtures allow frequent play even with relatively small tee areas. High density and wear tolerance give a perfect turf for ideal teeing off. Repairing with the initial mixtures allows quick recovery.

Long lasting low input rough

The Johnsons range of mixtures for golf roughs are composed to reduce requirements and maintenance.



Green 105 CT Sustainable and low input golf greens

- Traditional greens specification
- Tolerant to close mowing
- Fine, dense turf
- Excellent disease resistance

%	Species
20%	Slender creeping red fescue
20%	Slender creeping red fescue
20%	Chewings fescue
20%	Chewings fescue
20%	Browntop bent



Sowing rate:

35g/m²

Oversowing:

25g/m²

Mowing height:

down to 5 mm

Green 115 CT Intensive wear golf greens

- Quick establishment
- Extremely hard wearing
- Excellent recovery
- High shoot density

%	Species
30%	Perennial ryegrass
30%	Perennial ryegrass
20%	Slender creeping red fescue
10%	Browntop bent
10%	Browntop bent



Sowing rate:

35–50g/m²

Oversowing:

25–50g/m²

Mowing height:

down to 5 mm

Green 110 CT Golf greens, high performance renovation mix

- Fescue nurse crop, ideal for overseeding
- High tolerance to close mowing
- Excellent colour
- Reduced Poa Annua invasion

%	Species
25%	Chewings fescue
15%	Slender creeping red fescue
40%	Browntop bent
20%	Browntop bent



Sowing rate:

15–20g/m²

Oversowing:

8g/m²

Mowing height:

down to 4 mm

Green 120 CT Oversowing greens

- Drought tolerant and highly resistant to disease
- Maintains Fescue in the greens
- Shade tolerant
- Reduces fertiliser and water requirements

%	Species
25%	Slender creeping red fescue
25%	Slender creeping red fescue
25%	Chewings fescue
25%	Chewings fescue



Sowing rate:

35–50g/m²

Oversowing:

15–25g/m²

Mowing height:

down to 5 mm

Tee 115 CT Intensive wear golf tees

- Quick establishment
- Extremely hard wearing
- Excellent recovery
- High shoot density

%	Species
30%	Perennial ryegrass
30%	Perennial ryegrass
20%	Slender creeping red fescue
10%	Browntop bent
10%	Browntop bent



Sowing rate:

35–50g/m²

Oversowing:

25–50g/m²

Mowing height:

down to 10 mm

Tee 120 CT Oversowing tees

- Drought tolerant and highly resistant to disease
- Maintains Fescue in the tees
- Shade tolerant
- Reduces fertiliser and water requirements

%	Species
25%	Slender creeping red fescue
25%	Slender creeping red fescue
25%	Chewings fescue
25%	Chewings fescue



Sowing rate:

35–50g/m²

Oversowing:

15–25g/m²

Mowing height:

down to 10 mm

Tee 125 CT Normal wear, without perennial ryegrass

- Sustainable and low input
- Dense with wear tolerance
- High shoot density
- Low thatch

%	Species
15%	Slender creeping red fescue
15%	Slender creeping red fescue
15%	Chewings fescue
15%	Chewings fescue
20%	Smooth stalked meadow grass
20%	Smooth stalked meadow grass



Sowing rate:

35–50g/m²

Oversowing:

15–25g/m²

Mowing height:

down to 10 mm

Tee 130 CT Very fine leaved and low growing

- High shoot density, fine leaved
- Improved disease resistance
- Naturally darker colour
- Reduced cutting requirement

%	Species
10%	Slender creeping red fescue
15%	Slender creeping red fescue
25%	Chewings fescue
25%	Chewings fescue
25%	Browntop bent



Sowing rate:

35–50g/m²

Oversowing:

15–25g/m²

Mowing height:

down to 10 mm

Tee 135 CT
Pay & Play with very high wear,
with perennial ryegrass

- Hardwearing under close mowing conditions
- Ideal for Pay & Play
- Fine, dense appearance
- Self repairing with slender creeping red fescue and smooth stalked meadow grass

%	Species
15%	Perennial ryegrass
15%	Perennial ryegrass
10%	Slender creeping red fescue
10%	Chewings fescue
25%	Smooth stalked meadow grass
25%	Smooth stalked meadow grass



Sowing rate:
35–50g/m²

Oversowing:
15–25g/m²

Mowing height:
down to 10 mm

Tee 140 CT
High wear tolerance,
with perennial ryegrass

- Hardwearing under close mowing conditions
- Rhizomatous growth habit improves natural regeneration from divoting
- Excellent year round colour and disease resistance
- Attractive sward

%	Species
20%	Slender creeping red fescue
20%	Chewings fescue
15%	Smooth stalked meadow grass
15%	Smooth stalked meadow grass
15%	Perennial ryegrass
15%	Perennial ryegrass



Sowing rate:
35–50g/m²

Oversowing:
15–25g/m²

Mowing height:
down to 10 mm

CT stands for “Cold & Temperate areas”

Tee 145 HD
High wear tolerance,
with perennial ryegrass

- Very hardwearing under close mowing conditions
- Rhizomatous growth habit improves natural regeneration from divoting
- Excellent year round colour and disease resistance
- Attractive sward with dark appearance

%	Species
40%	Smooth stalked meadow grass
25%	Smooth stalked meadow grass
20%	Smooth stalked meadow grass
15%	Perennial ryegrass



Sowing rate:
35–50g/m²

Oversowing:
15–25g/m²

Mowing height:
down to 10 mm

Tee 150 CT/HD
Overseeding mix of perennial ryegrass

- A combination of 3 top rated cultivars
- Highly tolerant of close mown wear, produces a dense sward with excellent root structure
- Outstanding fineness of leaf
- Rapid re-growth characteristics and excellent

%	Species
40%	Perennial ryegrass
20%	Perennial ryegrass
40%	Perennial ryegrass



Sowing rate:
35–50g/m²

Oversowing:
15–25g/m²

Mowing height:
down to 10 mm

12 HD stands for “Hot & Dry areas”

Fairway 115 CT Intensive wear with perennial ryegrass

- Quick establishment
- Extremely hard wearing
- Excellent recovery
- High shoot density

%	Species
30%	Perennial ryegrass
30%	Perennial ryegrass
20%	Slender creeping red fescue
10%	Browntop bent
10%	Browntop bent



Sowing rate:
35–50g/m²

Oversowing:
25–50g/m²

Mowing height:
down to 10 mm

Fairway 125 CT Normal wear, without perennial ryegrass

- Sustainable and low input
- Dense with wear tolerance
- High shoot density
- Low thatch

%	Species
15%	Slender creeping red fescue
15%	Slender creeping red fescue
15%	Chewings fescue
15%	Chewings fescue
20%	Smooth stalked meadow grass
20%	Smooth stalked meadow grass



Sowing rate:
35–50g/m²

Oversowing:
15–25g/m²

Mowing height:
down to 10 mm

Fairway 120 CT Oversowing

- Drought tolerant and highly resistant to disease
- Maintains Fescue in the fairways
- Shade tolerant
- Reduces fertiliser and water requirements

%	Species
25%	Slender creeping red fescue
25%	Slender creeping red fescue
25%	Chewings fescue
25%	Chewings fescue



Sowing rate:
35–50g/m²

Oversowing:
15–25g/m²

Mowing height:
down to 10 mm

Fairway 130 CT Very fine leaved and low growing

- High shoot density, fine leaved
- Improved disease resistance
- Naturally darker colour
- Reduced cutting requirement

%	Species
10%	Slender creeping red fescue
15%	Slender creeping red fescue
25%	Chewings fescue
25%	Chewings fescue
25%	Browntop bent



Sowing rate:
35–50g/m²

Oversowing:
15–25g/m²

Mowing height:
down to 10 mm

Fairway 135 CT Pay & Play with very high wear, with perennial ryegrass

- Hardwearing under close mowing conditions
- Ideal for Pay & Play
- Fine, dense appearance
- Self repairing with slender creeping red fescue and smooth stalked meadow grass

%	Species
15%	Perennial ryegrass
15%	Perennial ryegrass
10%	Slender creeping red fescue
10%	Chewings fescue
25%	Smooth stalked meadow grass
25%	Smooth stalked meadow grass



Sowing rate:
35–50g/m²

Oversowing:
15–25g/m²

Mowing height:
down to 10 mm

Fairway 145 HD High wear tolerance, with perennial ryegrass

- Very hardwearing under close mowing conditions
- Rhizomatous growth habit improves natural regeneration from divoting
- Excellent year round colour and disease resistance
- Attractive sward with dark appearance

%	Species
40%	Smooth stalked meadow grass
25%	Smooth stalked meadow grass
20%	Smooth stalked meadow grass
15%	Perennial ryegrass



Sowing rate:
35–50g/m²

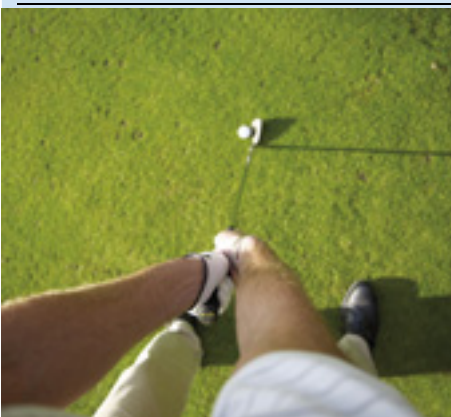
Oversowing:
15–25g/m²

Mowing height:
down to 10 mm

Fairway 140 CT High wear tolerance

- Hardwearing under close mowing conditions
- Rhizomatous growth habit improves natural regeneration from divoting
- Excellent year round colour and disease resistance
- Attractive sward

%	Species
20%	Slender creeping red fescue
20%	Chewings fescue
15%	Smooth stalked meadow grass
15%	Smooth stalked meadow grass
15%	Perennial ryegrass
15%	Perennial ryegrass



Sowing rate:
35–50g/m²

Oversowing:
15–25g/m²

Mowing height:
down to 10 mm

Rough 125 CT Low cutting height

- Sustainable and low input
- Dense with wear tolerance
- High shoot density
- Low thatch

%	Species
15%	Slender creeping red fescue
15%	Slender creeping red fescue
15%	Chewings fescue
15%	Chewings fescue
20%	Smooth stalked meadow grass
20%	Smooth stalked meadow grass



Sowing rate:
35–50g/m²

Oversowing:
15–25g/m²

Mowing height:
down to 10 mm

Rough 130 CT

Very fine leaved
and low growing

- High shoot density, fine leaved
- Improved disease resistance
- Naturally darker colour
- Reduced cutting requirement

%	Species
10%	Slender creeping red fescue
15%	Slender creeping red fescue
25%	Chewings fescue
25%	Chewings fescue
25%	Browntop bent



Sowing rate:
30g/m²

Mowing height:
down to 20 mm

Rough 160 CT

Low input
with perennial ryegrass

- Rapid cover
- Slow re-growth, reducing maintenance costs
- Reduced fertiliser requirements
- Year round colour

%	Species
25%	Smooth stalked meadow grass
40%	Strong creeping red fescue
20%	Perennial ryegrass
15%	Browntop bent



Sowing rate:
30g/m²

Mowing height:
down to 20 mm

Rough 155 CT

Low input

- Tolerant of poor, dry soils
- Very slow re-growth, reducing maintenance costs
- Reduced fertiliser requirements
- Year round colour

%	Species
50%	Strong creeping red fescue
15%	Hard fescue
30%	Smooth stalked meadow grass
5%	Browntop bent



Sowing rate:
35–50g/m²

Oversowing:
15–25g/m²

Mowing height:
down to 20 mm

Rough 165 HD

All-round

- Highly drought and heat tolerant
- Will preserve the rough during summer without making the game too easy
- Reduced water requirements
- Year round dark colour

%	Species
40%	Tall fescue
45%	Tall fescue
10%	Smooth stalked meadow grass
5%	Hard fescue



Sowing rate:
30g/m²

Mowing height:
down to 30 mm

Rough 170 HD All-round, with perennial ryegrass

- Reduced water requirement
- Exceptional wear tolerance
- High density and sward strength
- Year round attractive dark colour and excellent disease resistance

%	Species
35%	Perennial ryegrass
35%	Tall fescue
15%	Smooth stalked meadow grass
15%	Smooth stalked meadow grass



Sowing rate:
25–35g/m²

Oversowing:
30g/m²

Mowing height:
down to 25 mm

Drive 120 CT Oversowing

- Drought tolerant and highly resistant to disease
- Maintains Fescue on the driving range
- Shade tolerant
- Reduces fertiliser and water requirements

%	Species
25%	Slender creeping red fescue
25%	Slender creeping red fescue
25%	Chewings fescue
25%	Chewings fescue



Sowing rate:
35–50g/m²

Oversowing:
15–25g/m²

Mowing height:
down to 10 mm

CT stands for “Cold & Temperate areas”

Drive 135 CT High wear tolerance, with perennial ryegrass

- Hardwearing under close mowing conditions
- Ideal for Pay & Play
- Fine, dense appearance
- Self repairing with slender creeping red fescue and smooth stalked meadow grass

%	Species
15%	Perennial ryegrass
15%	Perennial ryegrass
10%	Slender creeping red fescue
10%	Chewings fescue
25%	Smooth stalked meadow grass
25%	Smooth stalked meadow grass



Sowing rate:
35–50g/m²

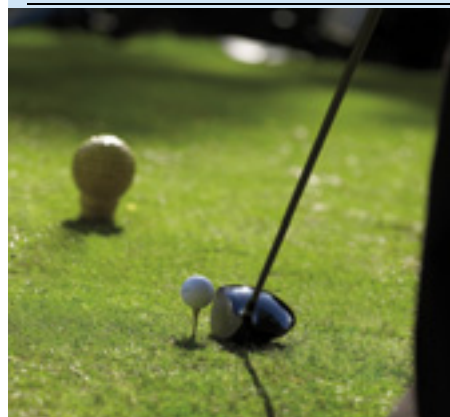
Oversowing:
15–25g/m²

Mowing height:
down to 10 mm

Drive 140 CT High wear tolerance

- Hardwearing under close mowing conditions
- Rhizomatous growth habit improves natural regeneration from divoting
- Excellent year round colour and disease resistance
- Attractive sward

%	Species
20%	Slender creeping red fescue
20%	Chewings fescue
15%	Smooth stalked meadow grass
15%	Smooth stalked meadow grass
15%	Perennial ryegrass
15%	Perennial ryegrass



Sowing rate:
35–50g/m²

Oversowing:
15–25g/m²

Mowing height:
down to 10 mm

16 HD stands for “Hot & Dry areas”

Drive 145 HD

High wear tolerance,
with perennial ryegrass

- Very hardwearing under close mowing conditions
- Rhizomatous growth habit improves natural regeneration from divoting
- Excellent year round colour and disease resistance
- Attractive sward with dark appearance

%	Species
40%	Smooth stalked meadow grass
25%	Smooth stalked meadow grass
20%	Smooth stalked meadow grass
15%	Perennial ryegrass



Sowing rate:

35–50g/m²

Oversowing:

15–25g/m²

Mowing height:

down to 10 mm

Drive 150 CT/HD

Overseeding mix for
close mown areas

- A combination of 3 top rated cultivars
- Highly tolerant of close mown wear, produces a dense sward with excellent root structure
- Outstanding fineness of leaf
- Rapid re-growth characteristics

%	Species
40%	Perennial ryegrass
20%	Perennial ryegrass
40%	Perennial ryegrass



Sowing rate:

35–50g/m²

Oversowing:

15–25g/m²

Mowing height:

down to 5 mm



Turf Species Characteristics...

	<i>Perennial ryegrass</i>	<i>Strong creeping red fescue</i>	<i>Chewings fescue</i>	<i>Slender creeping red fescue</i>	<i>Sheeps/Hard fescue</i>	<i>Tall fescue</i>	<i>Smooth stalked meadow grass</i>	<i>Creeping bent</i>	<i>Fine leaved bent</i>
Wear tolerance	•••••	••	••	••	••	•••••	•••••	••	••
Disease tolerance	••••	•••••	•••	••	•••	•••••	•••••	•	•
Drought tolerance	••	•••••	•••••	•••••	•••••	•••••	•••	•••	••
Speed of establishment	•••••	•••••	•••	•••	•••	•••	•	••	••
Nutrient requirements	•••••	•••	••	••	••	•••••	•••••	•••••	•••••
Heat tolerance	•	•••	•••	•••	•••	•••••	•••	•••••	•••
Fineness of leaf	•	•••	•••••	•••••	•••••	•	••	•••	•••
Cleaness of cut	••	•••••	•••••	•••••	•••••	••	•••••	•••	•••
Salt tolerance	••	•••	•••	•••••	•••••	•••••	••	•••	•••
Shade tolerance	••	•••	•••	•••••	•••••	•••	•••	•••	•••
Shoot density	••	••	•••••	•••••	•••••	•	•••	•••••	•••••
Submersion tolerance	•	••	••	••	••	•••	••	••	••
Thatch production	•	••	•••	•••	•••	••	••	•••••	•••••
Cold tolerance	•	•••	•••••	•••	•••••	••	•••	•••	•••

••••• = Best or High



Time to relax...





Marketed by **DLF-TRIFOLIUM**

DLF-TRIFOLIUM • Ny Østergade 9 • DK 4000 Roskilde • Tel. +45 46 33 03 00 30 • Fax +45 46 32 08 30 • www.dlf.com • dlf@dlf.com